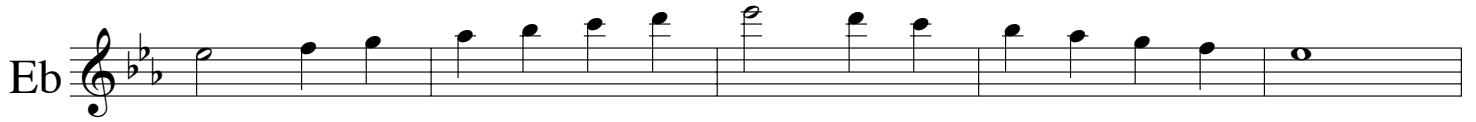


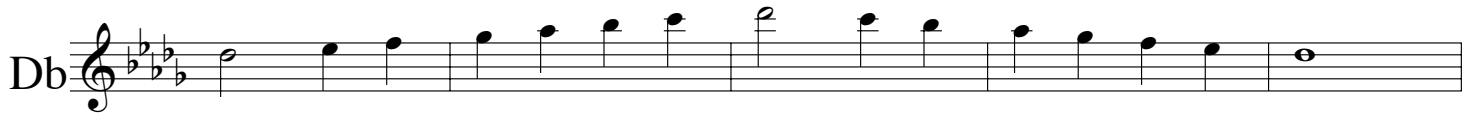
Flute

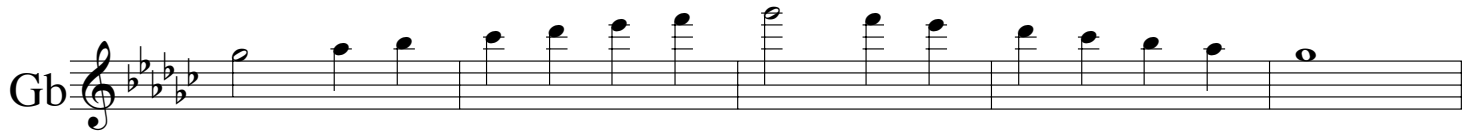
Grand Master Scale (major)

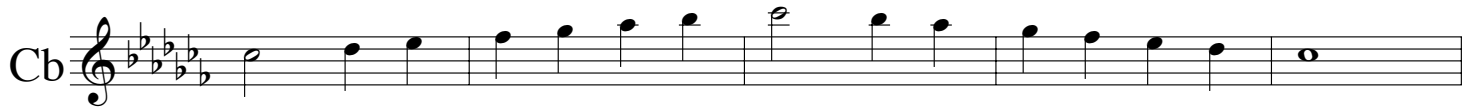
Bb 

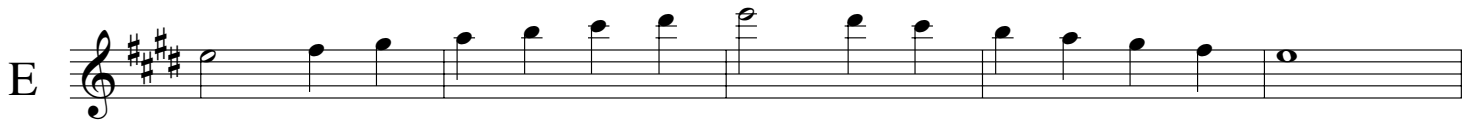
Eb 

Ab 

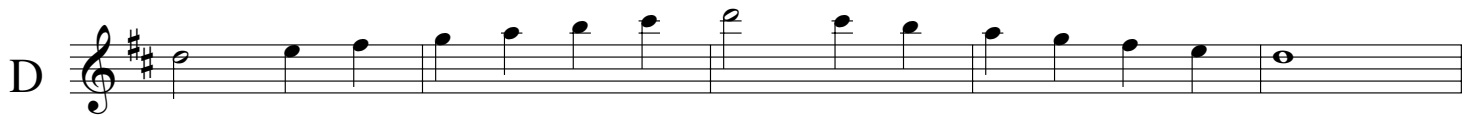
Db 

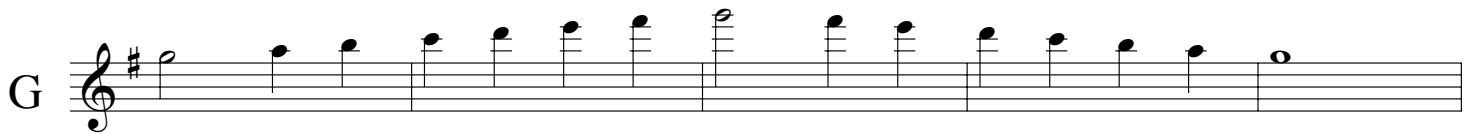
Gb 

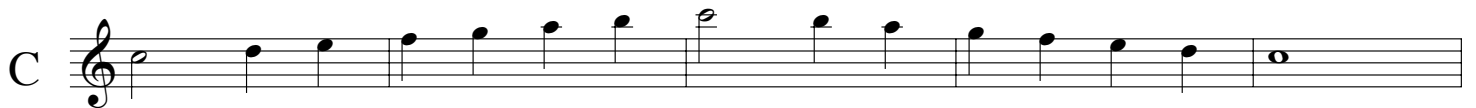
Cb 

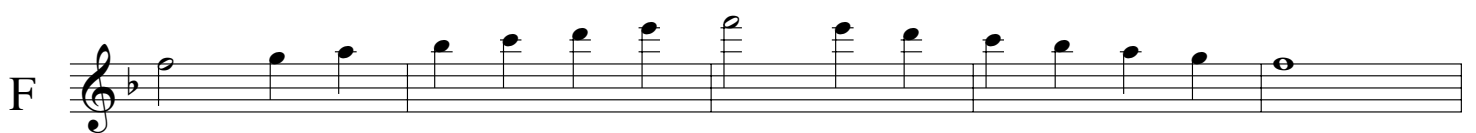
E 

A 

D 

G 

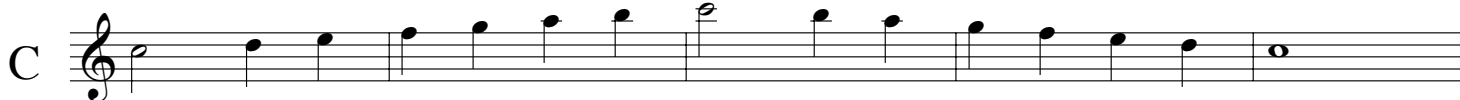
C 

F 

Bb 

Oboe

Grand Master Scale (major)



Clarinet

Grand Master Scale (major)

Concert Pitch

The image displays a musical score for a Clarinet, titled "Grand Master Scale (major)". The score is presented in twelve staves, each representing a different instrument or tuning. The first staff is labeled "Bb" and includes a box labeled "Concert Pitch" with an arrow pointing to the first note. The staves are labeled as follows from top to bottom: Bb, Eb, Ab, Db, Gb, Cb, E, A, D, G, C, F, and Bb. Each staff contains a single melodic line in treble clef with a common time signature (C). The notes are arranged in a sequence that covers the major scale for each instrument. The key signatures are: Bb (two flats), Eb (three flats), Ab (four flats), Db (five flats), Gb (six flats), Cb (seven flats), E (four sharps), A (three sharps), D (two sharps), G (one sharp), C (no sharps or flats), and F (one sharp). The final staff (Bb) ends with a double bar line.

Bass Clarinet

Grand Master Scale (major)

Concert Pitch

Bb

Musical staff for Bb instrument in concert pitch. The staff shows a scale starting on Bb, moving up stepwise through B, C, D, E, F, G, A, B, C, D, E, F, G, A, B, and ending on C.

Eb

Musical staff for Eb instrument in concert pitch. The staff shows a scale starting on Eb, moving up stepwise through E, F, G, A, B, C, D, E, F, G, A, B, C, D, E, F, G, and ending on A.

Ab

Musical staff for Ab instrument in concert pitch. The staff shows a scale starting on Ab, moving up stepwise through A, B, C, D, E, F, G, Ab, B, C, D, E, F, G, Ab, C, and ending on D.

Db

Musical staff for Db instrument in concert pitch. The staff shows a scale starting on Db, moving up stepwise through D, E, F, G, Ab, Bb, C, D, E, F, G, Ab, Bb, C, D, E, F, G, and ending on Ab.

Gb

Musical staff for Gb instrument in concert pitch. The staff shows a scale starting on Gb, moving up stepwise through G, Ab, Bb, C, D, E, F, Gb, Ab, Bb, C, D, E, F, Gb, Ab, Bb, C, and ending on D.

Cb

Musical staff for Cb instrument in concert pitch. The staff shows a scale starting on Cb, moving up stepwise through C, D, E, F, G, Ab, Bb, Cb, D, E, F, G, Ab, Bb, Cb, D, E, F, G, and ending on Ab.

E

Musical staff for E instrument in concert pitch. The staff shows a scale starting on E, moving up stepwise through F, G, A, B, C, D, E, F, G, A, B, C, D, E, F, G, A, and ending on B.

A

Musical staff for A instrument in concert pitch. The staff shows a scale starting on A, moving up stepwise through B, C, D, E, F, G, A, B, C, D, E, F, G, A, B, C, D, and ending on E.

D

Musical staff for D instrument in concert pitch. The staff shows a scale starting on D, moving up stepwise through E, F, G, A, B, C, D, E, F, G, A, B, C, D, E, F, G, A, and ending on B.

G

Musical staff for G instrument in concert pitch. The staff shows a scale starting on G, moving up stepwise through A, B, C, D, E, F, G, A, B, C, D, E, F, G, A, B, C, and ending on D.

C

Musical staff for C instrument in concert pitch. The staff shows a scale starting on C, moving up stepwise through D, E, F, G, A, B, C, D, E, F, G, A, B, C, D, E, F, G, and ending on A.

F

Musical staff for F instrument in concert pitch. The staff shows a scale starting on F, moving up stepwise through G, A, B, C, D, E, F, G, A, B, C, D, E, F, G, A, B, and ending on C.

Bb

Musical staff for Bb instrument in concert pitch. The staff shows a scale starting on Bb, moving up stepwise through B, C, D, E, F, G, A, B, C, D, E, F, G, A, B, and ending on C.

Contra Clarinet Grand Master Scale (major)

Concert Pitch

Bb

Musical staff for Bb instrument, showing the major scale in concert pitch. The key signature has one flat (Bb) and the time signature is common time (C). The scale is written in treble clef, starting on Bb4 and ending on Bb5.

Eb

Musical staff for Eb instrument, showing the major scale in concert pitch. The key signature has three flats (Eb, F, C) and the time signature is common time (C). The scale is written in treble clef, starting on Eb4 and ending on Eb5.

Ab

Musical staff for Ab instrument, showing the major scale in concert pitch. The key signature has four flats (Ab, Bb, C, F) and the time signature is common time (C). The scale is written in treble clef, starting on Ab4 and ending on Ab5.

Db

Musical staff for Db instrument, showing the major scale in concert pitch. The key signature has five flats (Db, Eb, F, C, G) and the time signature is common time (C). The scale is written in treble clef, starting on Db4 and ending on Db5.

Gb

Musical staff for Gb instrument, showing the major scale in concert pitch. The key signature has six flats (Gb, Ab, Bb, C, F, G) and the time signature is common time (C). The scale is written in treble clef, starting on Gb4 and ending on Gb5.

Cb

Musical staff for Cb instrument, showing the major scale in concert pitch. The key signature has seven flats (Cb, Db, Eb, F, G, Ab, Bb) and the time signature is common time (C). The scale is written in treble clef, starting on Cb4 and ending on Cb5.

E

Musical staff for E instrument, showing the major scale in concert pitch. The key signature has four sharps (F#, C#, G#, D#) and the time signature is common time (C). The scale is written in treble clef, starting on E4 and ending on E5.

A

Musical staff for A instrument, showing the major scale in concert pitch. The key signature has three sharps (F#, C#, G#) and the time signature is common time (C). The scale is written in treble clef, starting on A4 and ending on A5.

D

Musical staff for D instrument, showing the major scale in concert pitch. The key signature has two sharps (F#, C#) and the time signature is common time (C). The scale is written in treble clef, starting on D4 and ending on D5.

G

Musical staff for G instrument, showing the major scale in concert pitch. The key signature has one sharp (F#) and the time signature is common time (C). The scale is written in treble clef, starting on G4 and ending on G5.

C

Musical staff for C instrument, showing the major scale in concert pitch. The key signature has no sharps or flats and the time signature is common time (C). The scale is written in treble clef, starting on C4 and ending on C5.

F

Musical staff for F instrument, showing the major scale in concert pitch. The key signature has one sharp (F#) and the time signature is common time (C). The scale is written in treble clef, starting on F4 and ending on F5.

Bb

Musical staff for Bb instrument, showing the major scale in concert pitch. The key signature has one flat (Bb) and the time signature is common time (C). The scale is written in treble clef, starting on Bb4 and ending on Bb5.

Alto Saxophone Grand Master Scale (major)

Concert Pitch

Bb

A musical staff for a Bb instrument. The key signature has one sharp (F#) and the time signature is common time (C). The scale is written in a single line, starting on a whole note G4 and ascending stepwise to a whole note G5.

Eb

A musical staff for an Eb instrument. The key signature has three flats (Bb, Eb, Ab) and the time signature is common time (C). The scale is written in a single line, starting on a whole note G4 and ascending stepwise to a whole note G5.

Ab

A musical staff for an Ab instrument. The key signature has four flats (Bb, Eb, Ab, Db) and the time signature is common time (C). The scale is written in a single line, starting on a whole note G4 and ascending stepwise to a whole note G5.

Db

A musical staff for a Db instrument. The key signature has five flats (Bb, Eb, Ab, Db, Gb) and the time signature is common time (C). The scale is written in a single line, starting on a whole note G4 and ascending stepwise to a whole note G5.

Gb

A musical staff for a Gb instrument. The key signature has six flats (Bb, Eb, Ab, Db, Gb, Cb) and the time signature is common time (C). The scale is written in a single line, starting on a whole note G4 and ascending stepwise to a whole note G5.

Cb

A musical staff for a Cb instrument. The key signature has seven flats (Bb, Eb, Ab, Db, Gb, Cb, Fb) and the time signature is common time (C). The scale is written in a single line, starting on a whole note G4 and ascending stepwise to a whole note G5.

E

A musical staff for an E instrument. The key signature has six sharps (F#, C#, G#, D#, A#, E#) and the time signature is common time (C). The scale is written in a single line, starting on a whole note G4 and ascending stepwise to a whole note G5.

A

A musical staff for an A instrument. The key signature has three sharps (F#, C#, G#) and the time signature is common time (C). The scale is written in a single line, starting on a whole note G4 and ascending stepwise to a whole note G5.

D

A musical staff for a D instrument. The key signature has two sharps (F#, C#) and the time signature is common time (C). The scale is written in a single line, starting on a whole note G4 and ascending stepwise to a whole note G5.

G

A musical staff for a G instrument. The key signature has one sharp (F#) and the time signature is common time (C). The scale is written in a single line, starting on a whole note G4 and ascending stepwise to a whole note G5.

C

A musical staff for a C instrument. The key signature has no sharps or flats and the time signature is common time (C). The scale is written in a single line, starting on a whole note G4 and ascending stepwise to a whole note G5.

F

A musical staff for an F instrument. The key signature has one flat (Bb) and the time signature is common time (C). The scale is written in a single line, starting on a whole note G4 and ascending stepwise to a whole note G5.

Bb

A musical staff for a Bb instrument. The key signature has one sharp (F#) and the time signature is common time (C). The scale is written in a single line, starting on a whole note G4 and ascending stepwise to a whole note G5. The staff ends with a double bar line.

Tenor Saxophone Grand Master Scale (major)

Concert Pitch

Bb

Eb

Ab

Db

Gb

Cb

E

A

D

G

C

F

Bb

Bari Sax

Grand Master Scale (major)

Concert Pitch

Bb

A musical staff for a Bb instrument. The key signature has one flat (Bb) and the time signature is common time (C). The scale is written in a single line, starting on a whole note G2 and ascending stepwise to a whole note G3, ending with a double bar line.

Eb

A musical staff for an Eb instrument. The key signature has three flats (Eb, F, C) and the time signature is common time (C). The scale is written in a single line, starting on a whole note G2 and ascending stepwise to a whole note G3, ending with a double bar line.

Ab

A musical staff for an Ab instrument. The key signature has four flats (Ab, Bb, C, F) and the time signature is common time (C). The scale is written in a single line, starting on a whole note G2 and ascending stepwise to a whole note G3, ending with a double bar line.

Db

A musical staff for a Db instrument. The key signature has five flats (Db, Eb, F, C, G) and the time signature is common time (C). The scale is written in a single line, starting on a whole note G2 and ascending stepwise to a whole note G3, ending with a double bar line.

Gb

A musical staff for a Gb instrument. The key signature has six flats (Gb, Ab, Bb, C, F, G) and the time signature is common time (C). The scale is written in a single line, starting on a whole note G2 and ascending stepwise to a whole note G3, ending with a double bar line.

Cb

A musical staff for a Cb instrument. The key signature has seven flats (Cb, Db, Eb, F, C, G, D) and the time signature is common time (C). The scale is written in a single line, starting on a whole note G2 and ascending stepwise to a whole note G3, ending with a double bar line.

E

A musical staff for an E instrument. The key signature has four sharps (F#, C#, G#, D#) and the time signature is common time (C). The scale is written in a single line, starting on a whole note G2 and ascending stepwise to a whole note G3, ending with a double bar line.

A

A musical staff for an A instrument. The key signature has three sharps (F#, C#, G#) and the time signature is common time (C). The scale is written in a single line, starting on a whole note G2 and ascending stepwise to a whole note G3, ending with a double bar line.

D

A musical staff for a D instrument. The key signature has two sharps (F#, C#) and the time signature is common time (C). The scale is written in a single line, starting on a whole note G2 and ascending stepwise to a whole note G3, ending with a double bar line.

G

A musical staff for a G instrument. The key signature has one sharp (F#) and the time signature is common time (C). The scale is written in a single line, starting on a whole note G2 and ascending stepwise to a whole note G3, ending with a double bar line.

C

A musical staff for a C instrument. The key signature has no sharps or flats and the time signature is common time (C). The scale is written in a single line, starting on a whole note G2 and ascending stepwise to a whole note G3, ending with a double bar line.

F

A musical staff for an F instrument. The key signature has one flat (Bb) and the time signature is common time (C). The scale is written in a single line, starting on a whole note G2 and ascending stepwise to a whole note G3, ending with a double bar line.

Bb

A musical staff for a Bb instrument. The key signature has one flat (Bb) and the time signature is common time (C). The scale is written in a single line, starting on a whole note G2 and ascending stepwise to a whole note G3, ending with a double bar line.

Trumpet

Grand Master Scale (major)

Concert Pitch

Bb

Eb

Ab

Db

Gb

Cb

E

A

D

G

C

F

Bb

Horn

Grand Master Scale (major)

Concert Pitch

Bb
Musical staff for Horn in Bb, showing the Grand Master Scale in concert pitch. The staff begins with a Bb clef and a common time signature. The scale is written in a major key with one flat (Bb major).

Eb
Musical staff for Horn in Eb, showing the Grand Master Scale in concert pitch. The staff begins with an Eb clef and a common time signature. The scale is written in a major key with three flats (Eb major).

Ab
Musical staff for Horn in Ab, showing the Grand Master Scale in concert pitch. The staff begins with an Ab clef and a common time signature. The scale is written in a major key with four flats (Ab major).

Db
Musical staff for Horn in Db, showing the Grand Master Scale in concert pitch. The staff begins with a Db clef and a common time signature. The scale is written in a major key with five flats (Db major).

Gb
Musical staff for Horn in Gb, showing the Grand Master Scale in concert pitch. The staff begins with a Gb clef and a common time signature. The scale is written in a major key with six flats (Gb major).

Cb
Musical staff for Horn in Cb, showing the Grand Master Scale in concert pitch. The staff begins with a Cb clef and a common time signature. The scale is written in a major key with seven flats (Cb major).

E
Musical staff for Horn in E, showing the Grand Master Scale in concert pitch. The staff begins with an E clef and a common time signature. The scale is written in a major key with four sharps (E major).

A
Musical staff for Horn in A, showing the Grand Master Scale in concert pitch. The staff begins with an A clef and a common time signature. The scale is written in a major key with three sharps (A major).

D
Musical staff for Horn in D, showing the Grand Master Scale in concert pitch. The staff begins with a D clef and a common time signature. The scale is written in a major key with two sharps (D major).

G
Musical staff for Horn in G, showing the Grand Master Scale in concert pitch. The staff begins with a G clef and a common time signature. The scale is written in a major key with one sharp (G major).

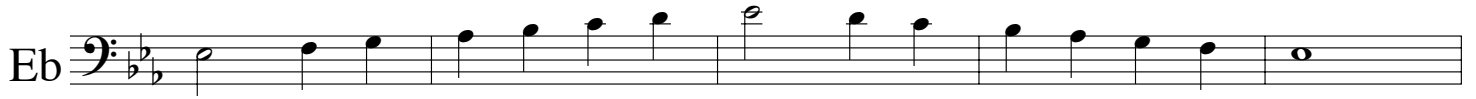
C
Musical staff for Horn in C, showing the Grand Master Scale in concert pitch. The staff begins with a C clef and a common time signature. The scale is written in a major key with no sharps or flats (C major).

F
Musical staff for Horn in F, showing the Grand Master Scale in concert pitch. The staff begins with an F clef and a common time signature. The scale is written in a major key with one flat (F major).

Bb
Musical staff for Horn in Bb, showing the Grand Master Scale in concert pitch. The staff begins with a Bb clef and a common time signature. The scale is written in a major key with one flat (Bb major).

Trombone/Euph

Grand Master Scale (major)



Tuba

Grand Master Scale (major)

Bb 

Eb 

Ab 

Db 

Gb 

Cb 

E 

A 

D 

G 

C 

F 

Bb 

Mallets


Grand Master Scale (major)

Bb  Musical staff for Bb instrument, showing the Grand Master Scale in Bb major. The scale starts on Bb and ends on Bb.

Eb  Musical staff for Eb instrument, showing the Grand Master Scale in Eb major. The scale starts on Eb and ends on Eb.

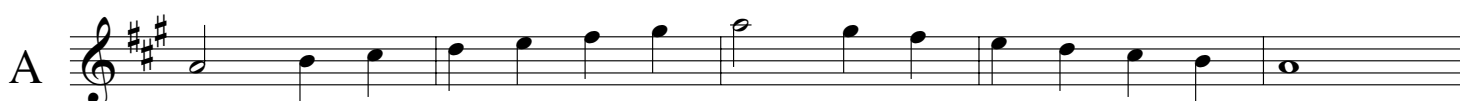
Ab  Musical staff for Ab instrument, showing the Grand Master Scale in Ab major. The scale starts on Ab and ends on Ab.

Db  Musical staff for Db instrument, showing the Grand Master Scale in Db major. The scale starts on Db and ends on Db.

Gb  Musical staff for Gb instrument, showing the Grand Master Scale in Gb major. The scale starts on Gb and ends on Gb.

Cb  Musical staff for Cb instrument, showing the Grand Master Scale in Cb major. The scale starts on Cb and ends on Cb.

E  Musical staff for E instrument, showing the Grand Master Scale in E major. The scale starts on E and ends on E.

A  Musical staff for A instrument, showing the Grand Master Scale in A major. The scale starts on A and ends on A.

D  Musical staff for D instrument, showing the Grand Master Scale in D major. The scale starts on D and ends on D.

G  Musical staff for G instrument, showing the Grand Master Scale in G major. The scale starts on G and ends on G.

C  Musical staff for C instrument, showing the Grand Master Scale in C major. The scale starts on C and ends on C.

F  Musical staff for F instrument, showing the Grand Master Scale in F major. The scale starts on F and ends on F.

Bb  Musical staff for Bb instrument, showing the Grand Master Scale in Bb major. The scale starts on Bb and ends on Bb.